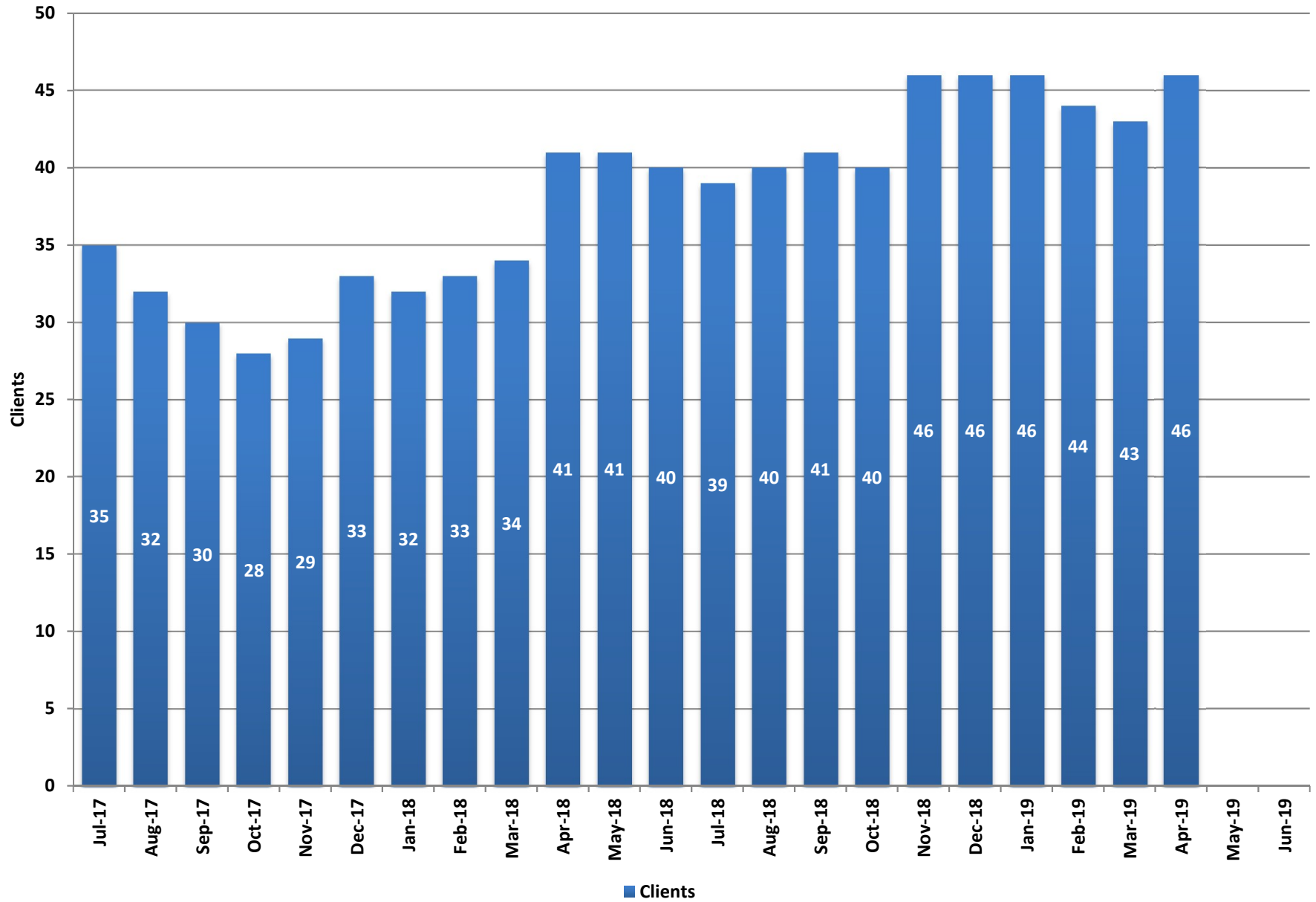


# DHHS Facilities Chart Pack

---

May 2019

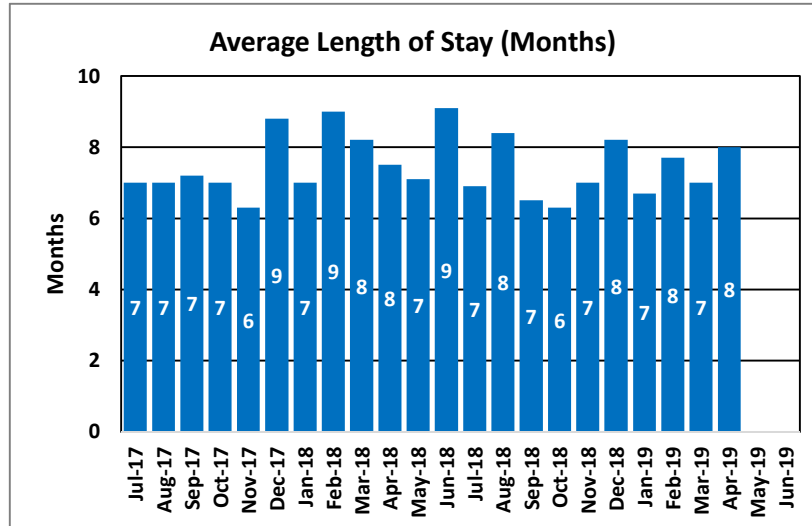
### Summit View



# Summit View

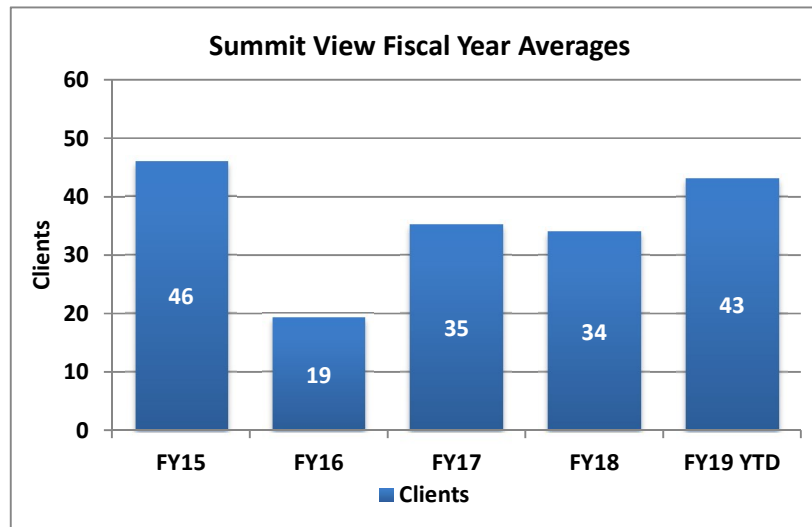
Summit View is a maximum security juvenile justice facility for males located in Las Vegas. Previously operated under contract with the Rite of Passage non-profit between December 2013 and March 2015, Summit View recently reopened as a state run facility in February 2016. The current bed capacity is 48 and staffing capacity is 40.

Month	Clients	Average Length of Stay (Months)
Jul-17	35	7
Aug-17	32	7
Sep-17	30	7
Oct-17	28	7
Nov-17	29	6
Dec-17	33	9
Jan-18	32	7
Feb-18	33	9
Mar-18	34	8
Apr-18	41	8
May-18	41	7
Jun-18	40	9
Jul-18	39	7
Aug-18	40	8
Sep-18	41	7
Oct-18	40	6
Nov-18	46	7
Dec-18	46	8
Jan-19	46	7
Feb-19	44	8
Mar-19	43	7
Apr-19	46	8
May-19		
Jun-19		

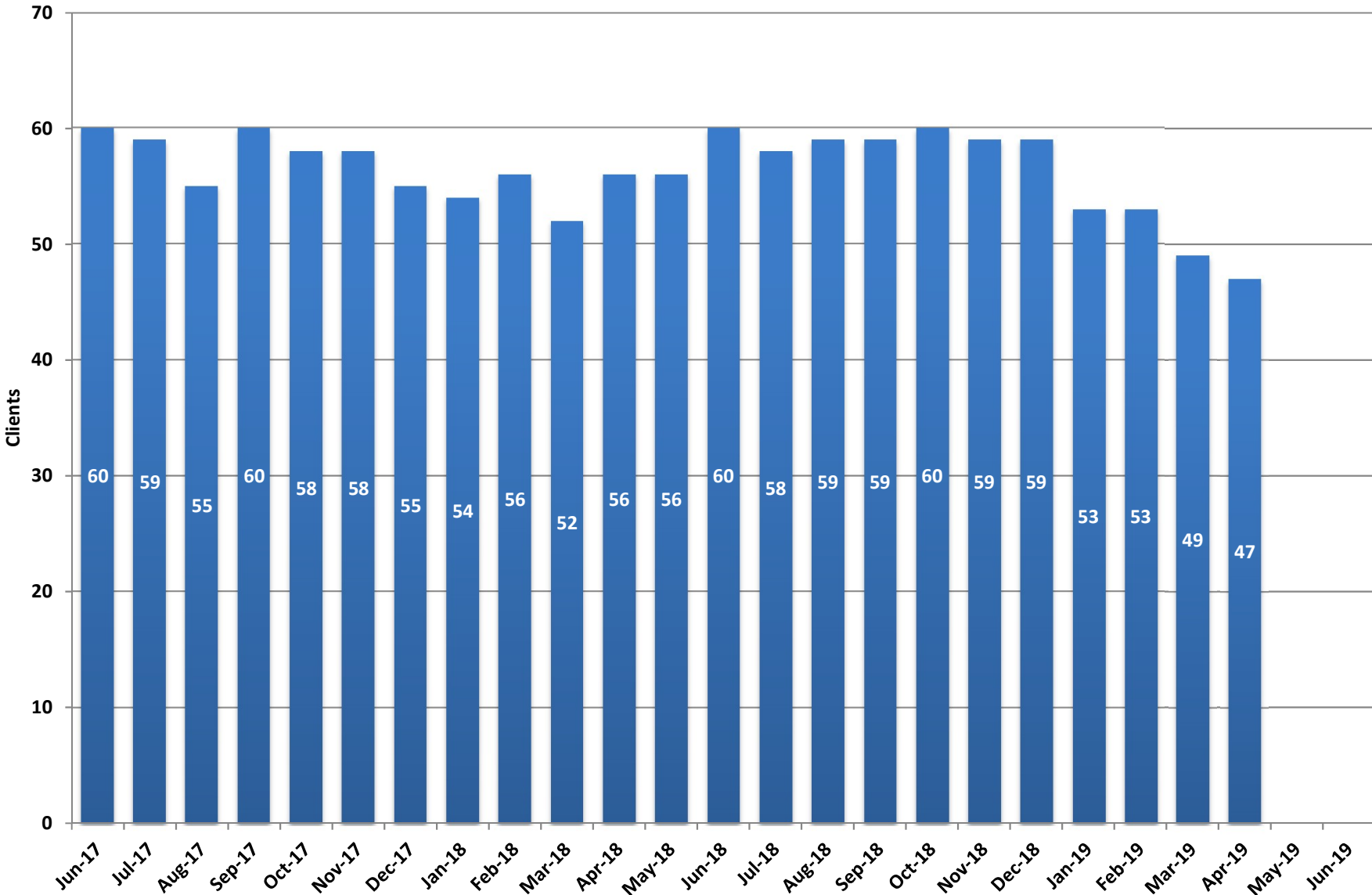


**Fiscal Year Averages**

Fiscal Year	Clients	Average Length of Stay (Months)
FY15	46	
FY16	19	
FY17	35	7
FY18	34	8
FY19 YTD	43	7



# Nevada Youth Training Center (NYTC)

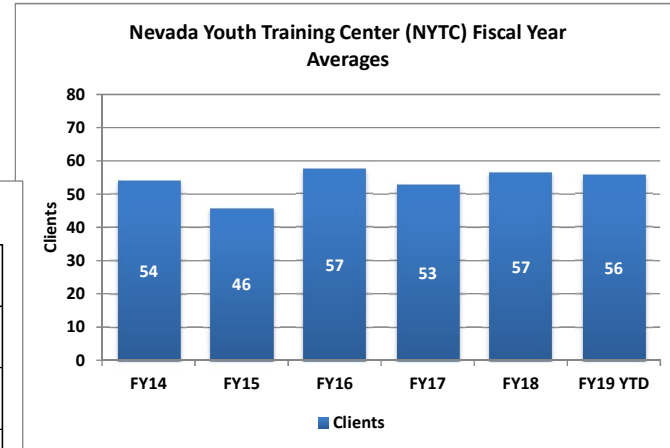
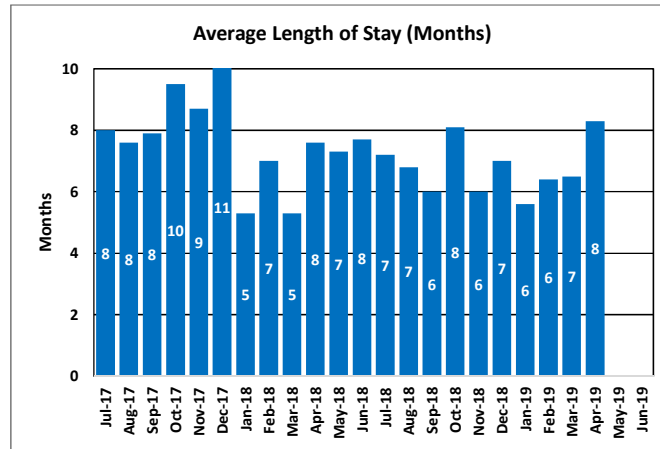


■ Clients

# Nevada Youth Training Center (NYTC)

Nevada Youth Training Center is a juvenile justice facility and training school for males located in Elko. It is a staff secure medium/minimum security facility. The current bed capacity is 60 and staffing capacity is 85.

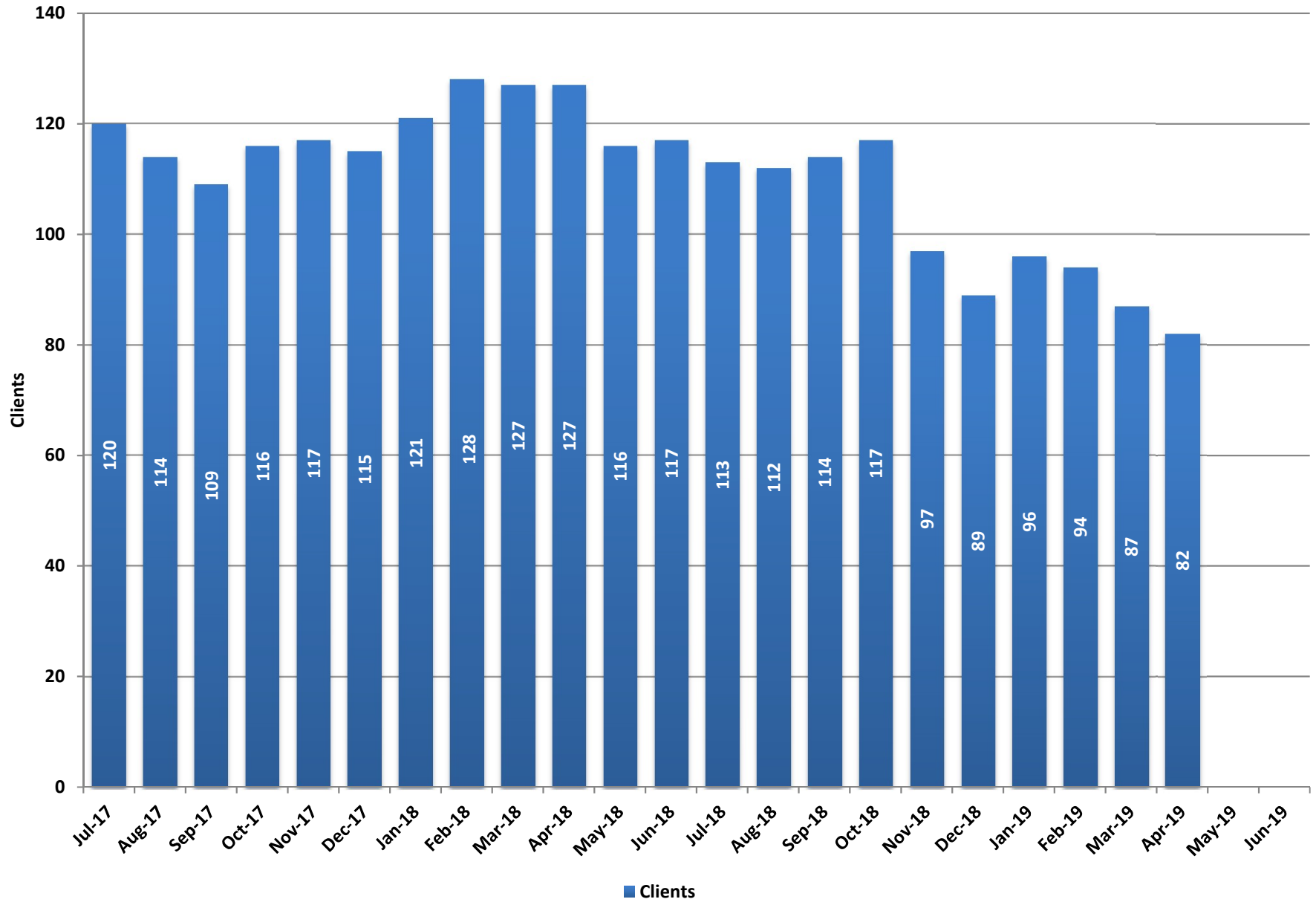
Month	Clients	Average Length of Stay (Months)
Jul-17	59	8
Aug-17	55	8
Sep-17	60	8
Oct-17	58	10
Nov-17	58	9
Dec-17	55	11
Jan-18	54	5
Feb-18	56	7
Mar-18	52	5
Apr-18	56	8
May-18	56	7
Jun-18	60	8
Jul-18	58	7
Aug-18	59	7
Sep-18	59	6
Oct-18	60	8
Nov-18	59	6
Dec-18	59	7
Jan-19	53	6
Feb-19	53	6
Mar-19	49	7
Apr-19	47	8
May-19		
Jun-19		



## Fiscal Year Averages

Fiscal Year	Clients	Average Length of Stay (Months)
FY14	54	7
FY15	46	7
FY16	57	7
FY17	53	7
FY18	57	8
FY19 YTD	56	7

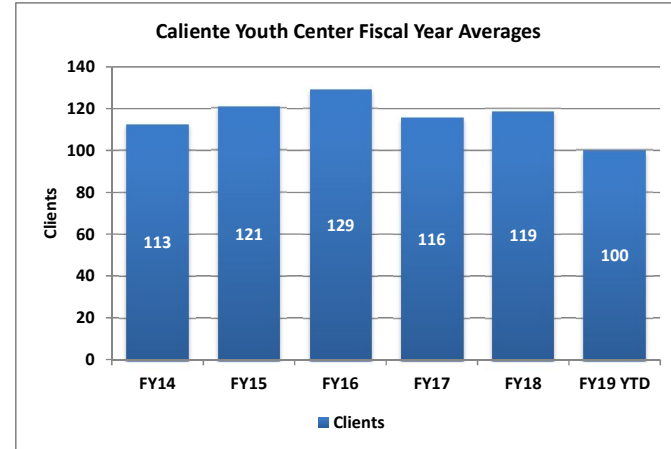
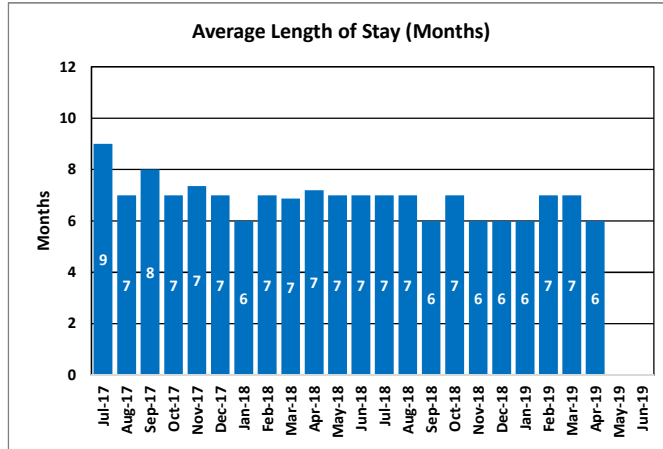
### Caliente Youth Center



# Caliente Youth Center

Caliente Youth Center is a juvenile justice facility and training school located in Caliente. It is a staff secure minimum security facility that serves both males and females. The current bed capacity is 140 and staffing capacity is 100.

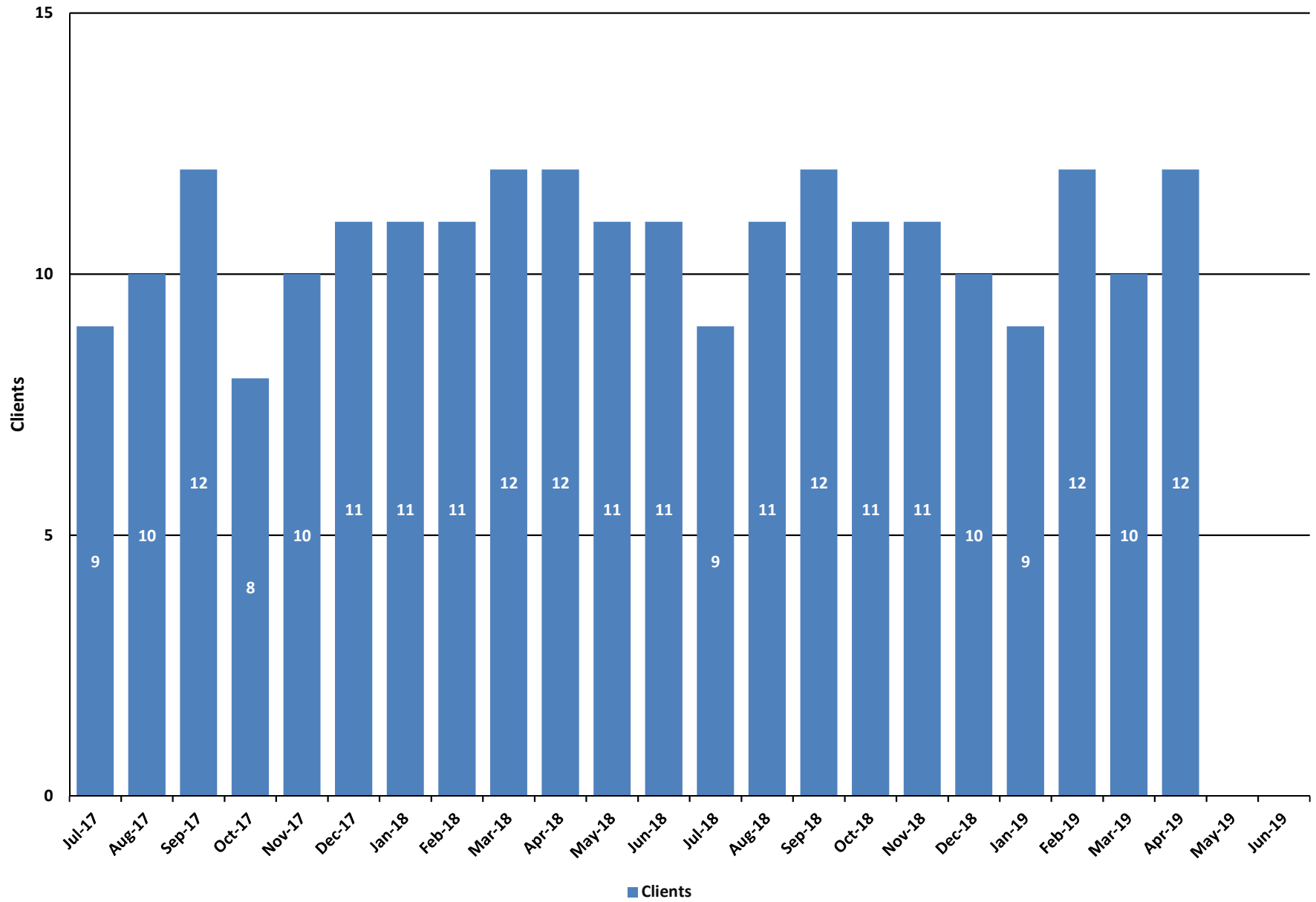
Month	Clients	Average Length of Stay (Months)
Jul-17	120	9
Aug-17	114	7
Sep-17	109	8
Oct-17	116	7
Nov-17	117	7
Dec-17	115	7
Jan-18	121	6
Feb-18	128	7
Mar-18	127	7
Apr-18	127	7
May-18	116	7
Jun-18	117	7
Jul-18	113	7
Aug-18	112	7
Sep-18	114	6
Oct-18	117	7
Nov-18	97	6
Dec-18	89	6
Jan-19	96	6
Feb-19	94	7
Mar-19	87	7
Apr-19	82	6
May-19		
Jun-19		



## Fiscal Year Averages

Fiscal Year	Clients	Average Length of Stay (Months)
FY14	113	9
FY15	121	8
FY16	129	8
FY17	116	8
FY18	119	7
FY19 YTD	100	7

### Desert Willow Treatment Center - Residential Services





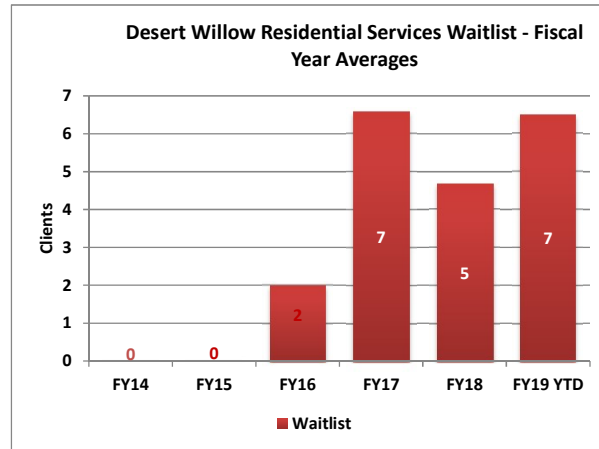
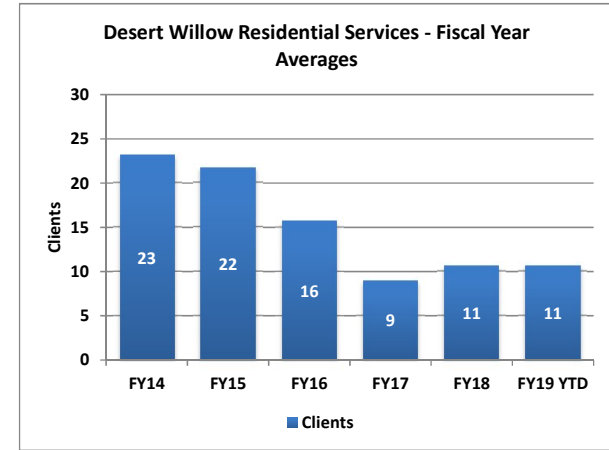
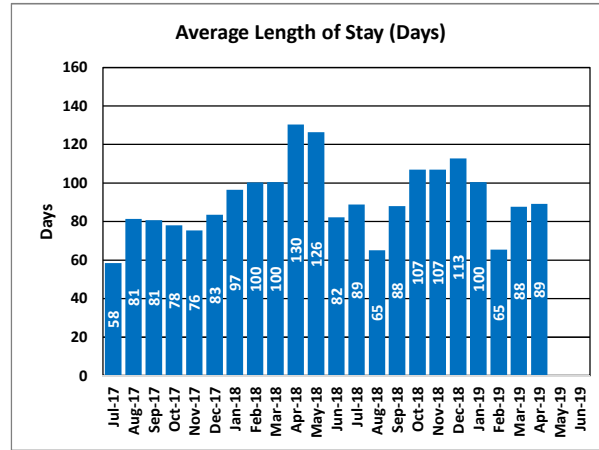
# Desert Willow Treatment Center - Residential Services

Desert Willow Treatment Center is a 20-bed licensed psychiatric hospital accredited by The Joint Commission that provides mental health treatment to youth throughout the state. The facility consists of one acute psychiatric unit (8 beds) and one residential treatment unit (12 beds) serving youth 12-17 years of age. These programs provide the most restrictive alternative for severely emotionally disturbed youth in the state. Many of the youth served present risks to themselves and/or their community and have not been successful in less restrictive settings.

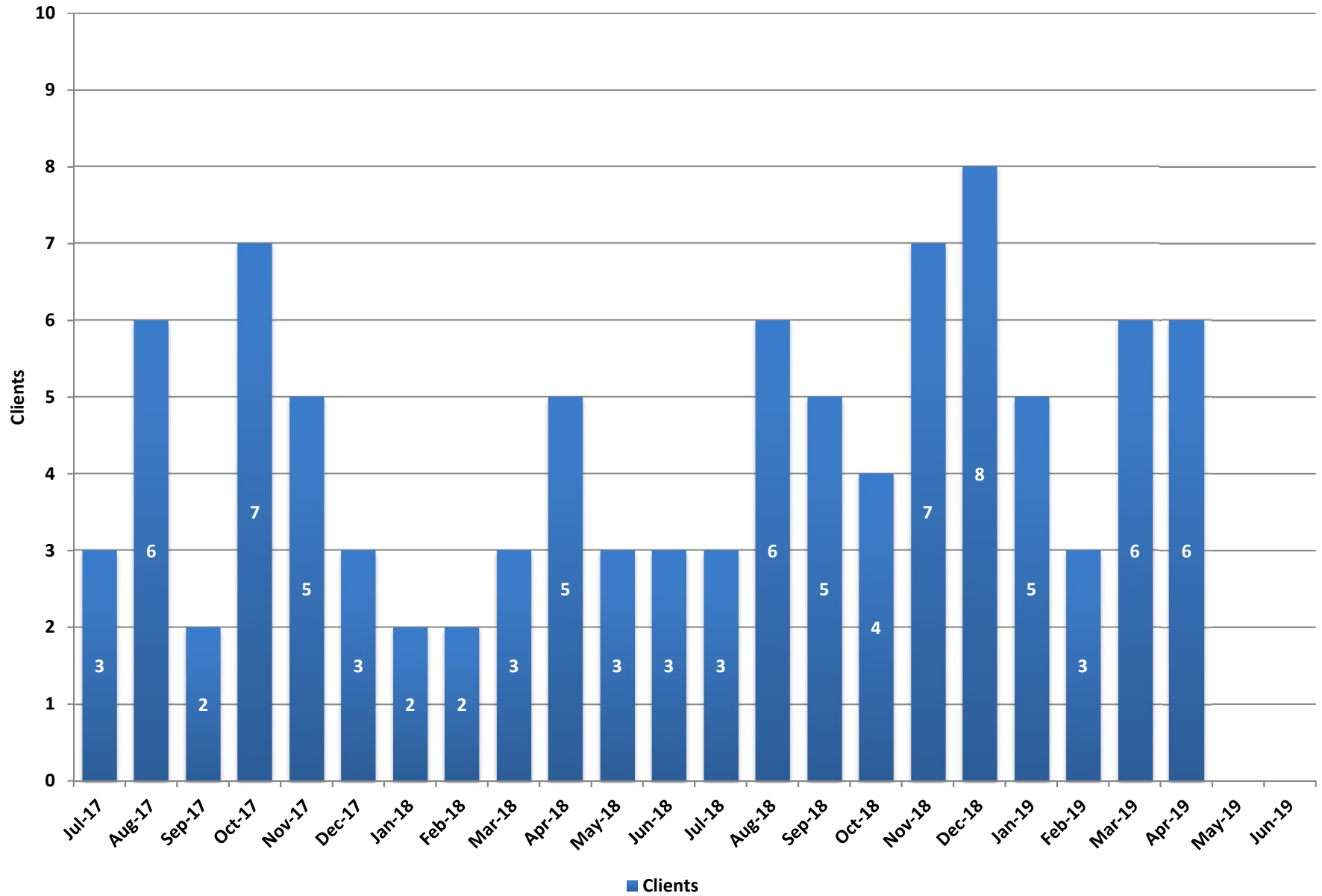
Month	Clients	Average Length of Stay (Days)	Waitlist
Jul-17	9	58	5
Aug-17	10	81	8
Sep-17	12	81	10
Oct-17	8	78	10
Nov-17	10	76	0
Dec-17	11	83	1
Jan-18	11	97	4
Feb-18	11	100	0
Mar-18	12	100	3
Apr-18	12	130	5
May-18	11	126	5
Jun-18	11	82	5
Jul-18	9	89	5
Aug-18	11	65	1
Sep-18	12	88	3
Oct-18	11	107	8
Nov-18	11	107	5
Dec-18	10	113	6
Jan-19	9	100	8
Feb-19	12	65	6
Mar-19	10	88	10
Apr-19	12	89	13
May-19			
Jun-19			

### Fiscal Year Averages

Fiscal Year	Clients	Average Length of Stay (Days)	Waitlist
FY14	23	81	0
FY15	22	90	0
FY16	16	109	2
FY17	9	70	7
FY18	11	91	5
FY19 YTD	11	91	7



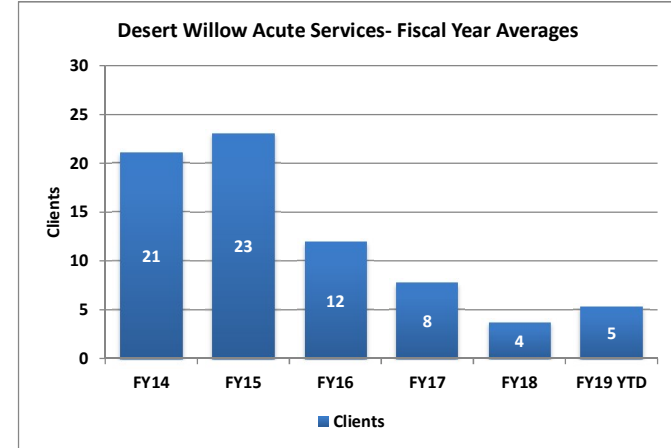
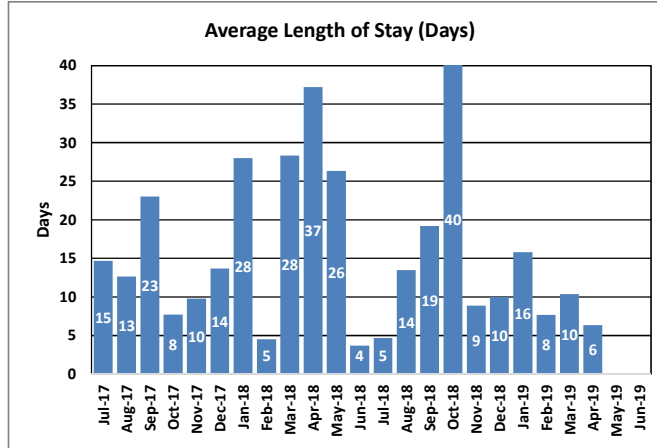
## Desert Willow Treatment Center - Acute Services



# Desert Willow Treatment Center - Acute Services

Desert Willow Treatment Center (DWTC) is licensed 20-bed psychiatric inpatient facility providing acute mental health services in a secure environment to children and adolescents with severe emotional disturbances. Desert Willow Treatment Center is accredited by the Joint Commission on Accreditation of Health Care Organizations (JCAHO).

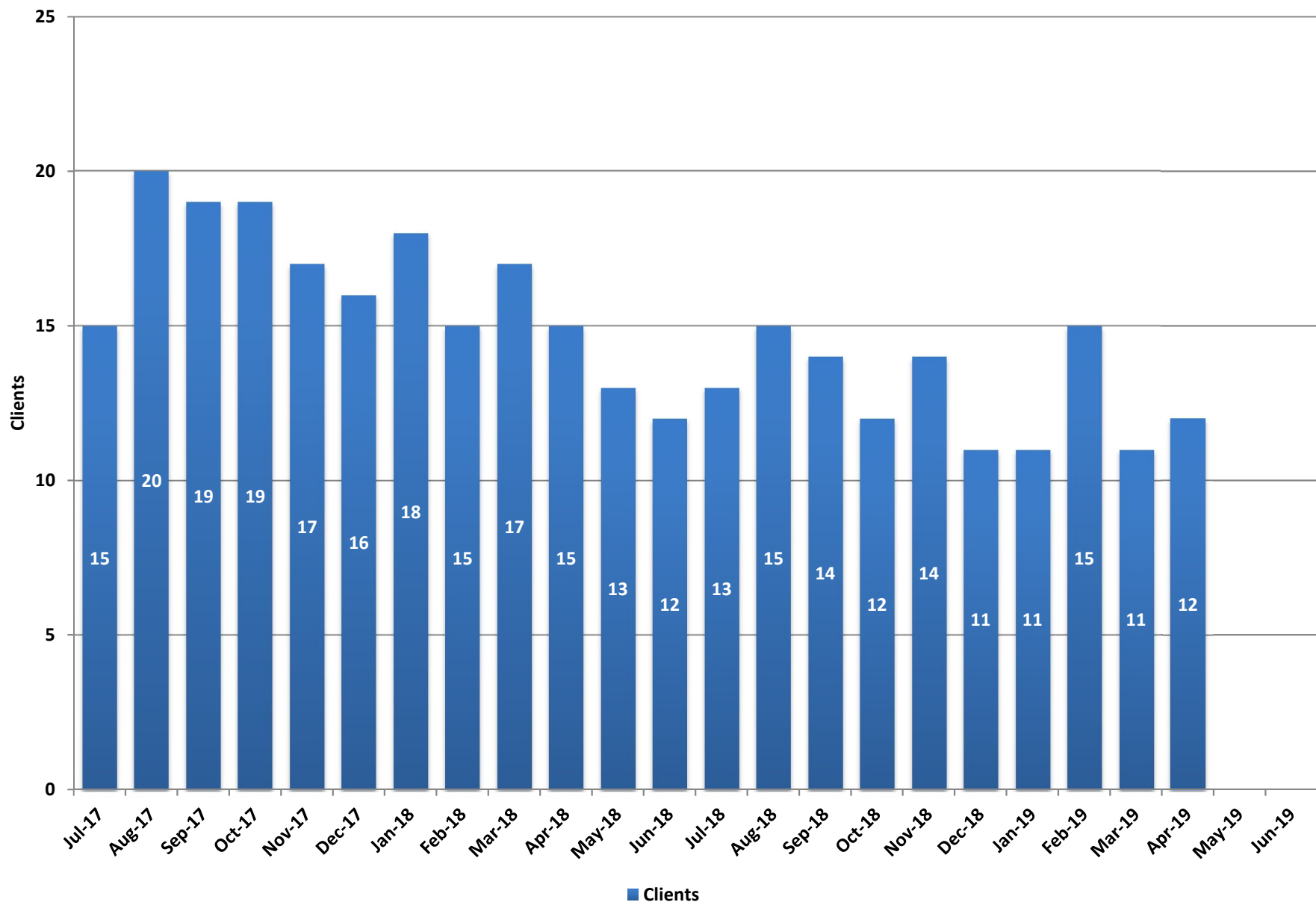
	Clients	Average Length of Stay (Days)
Jul-17	3	15
Aug-17	6	13
Sep-17	2	23
Oct-17	7	8
Nov-17	5	10
Dec-17	3	14
Jan-18	2	28
Feb-18	2	5
Mar-18	3	28
Apr-18	5	37
May-18	3	26
Jun-18	3	4
Jul-18	3	5
Aug-18	6	14
Sep-18	5	19
Oct-18	4	40
Nov-18	7	9
Dec-18	8	10
Jan-19	5	16
Feb-19	3	8
Mar-19	6	10
Apr-19	6	6
May-19		
Jun-19		



## Fiscal Year Averages

	Clients	Average Length of Stay (Days)
FY14	21	71
FY15	23	99
FY16	12	137
FY17	8	73
FY18	4	17
FY19 YTD	5	14

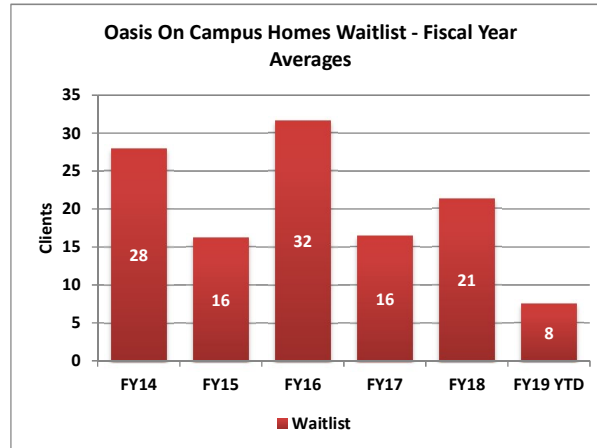
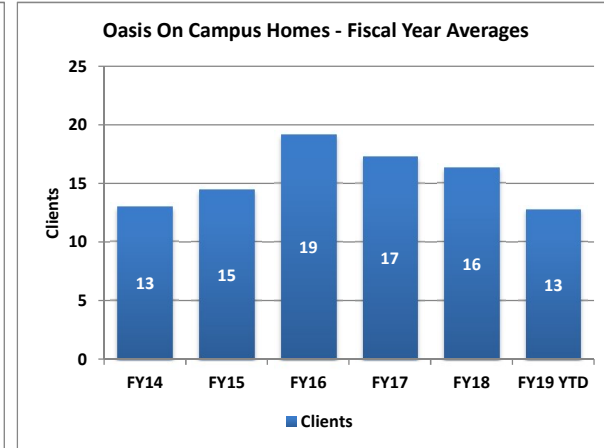
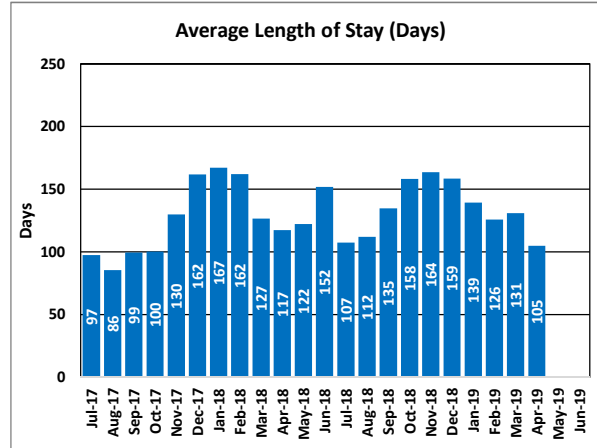
## Oasis On Campus Homes



# Oasis On Campus Homes

Oasis On Campus Treatment Homes provide mental health treatment home services in five homes with a total capacity of 28. Youth served are 6 through 17 years of age. The goals of treatment are to increase youths' emotional and behavioral functioning and to successfully transition them to family homes/lower levels of care in the community.

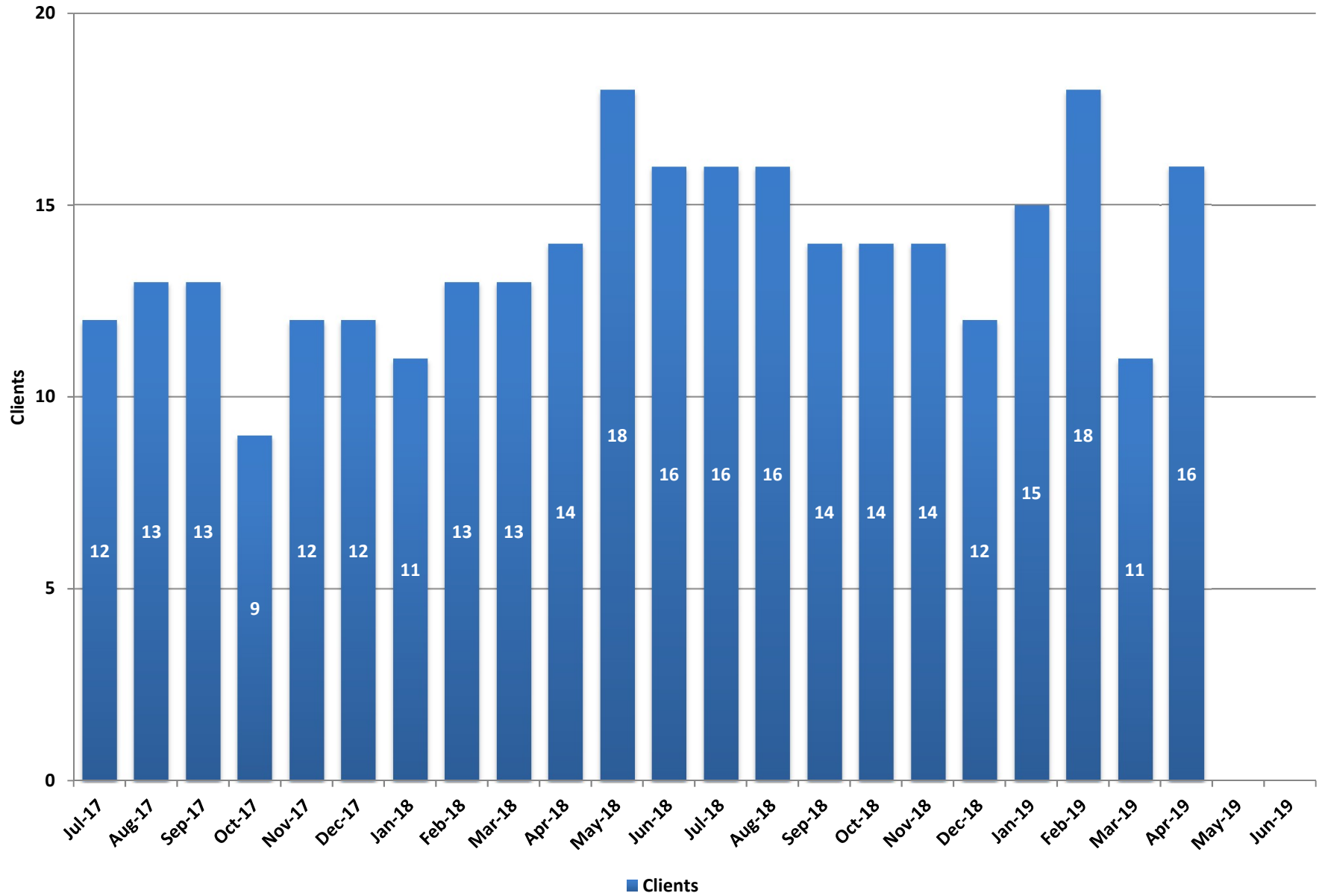
	Clients	Average Length of Stay (Days)	Waitlist
Jul-17	15	97	17
Aug-17	20	86	21
Sep-17	19	99	26
Oct-17	19	100	18
Nov-17	17	130	15
Dec-17	16	162	17
Jan-18	18	167	21
Feb-18	15	162	16
Mar-18	17	127	18
Apr-18	15	117	28
May-18	13	122	32
Jun-18	12	152	27
Jul-18	13	107	20
Aug-18	15	112	5
Sep-18	14	135	5
Oct-18	12	158	7
Nov-18	14	164	7
Dec-18	11	159	6
Jan-19	11	139	6
Feb-19	15	126	6
Mar-19	11	131	6
Apr-19	12	105	7
May-19			
Jun-19			



## Fiscal Year Averages

	Clients	Average Length of Stay (Days)	Waitlist
FY14	13	156	28
FY15	15	107	16
FY16	19	128	32
FY17	17	143	16
FY18	16	127	21
FY19 YTD	13	134	8

# Adolescent Treatment Center



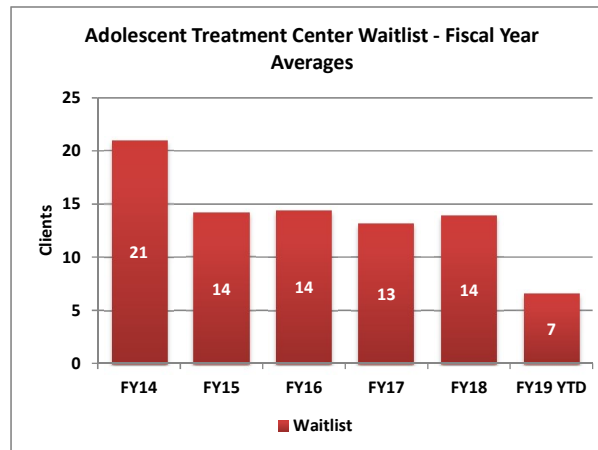
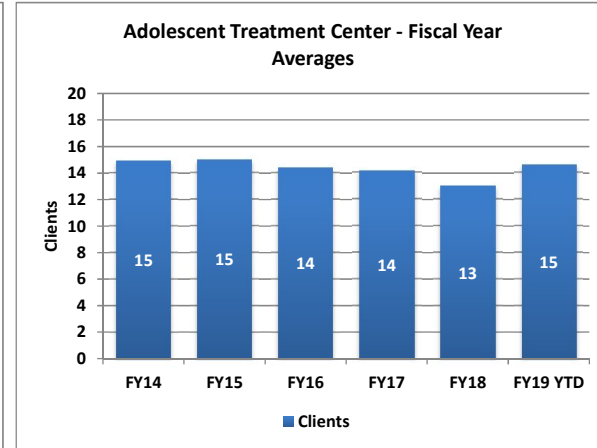
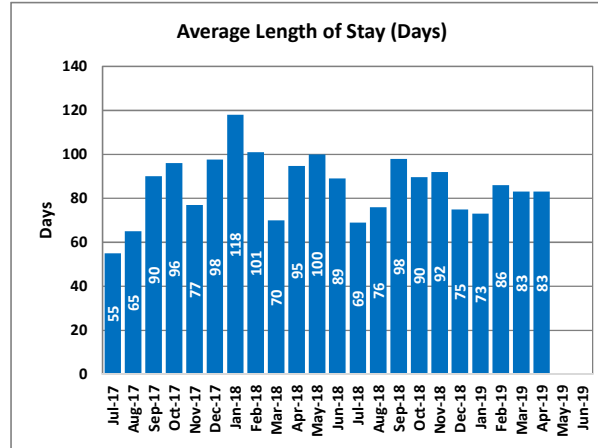
# Adolescent Treatment Center

Adolescent Treatment Center in Northern Nevada serves severely emotionally disturbed clients who need more intensive and specialized treatment than that which can be provided within their family home or community placement. The Adolescent Treatment Center is a 16-bed residential program providing staff secure, 24-hour supervised treatment for the most severely emotionally disturbed and behaviorally disordered adolescents, 13-17 years of age.

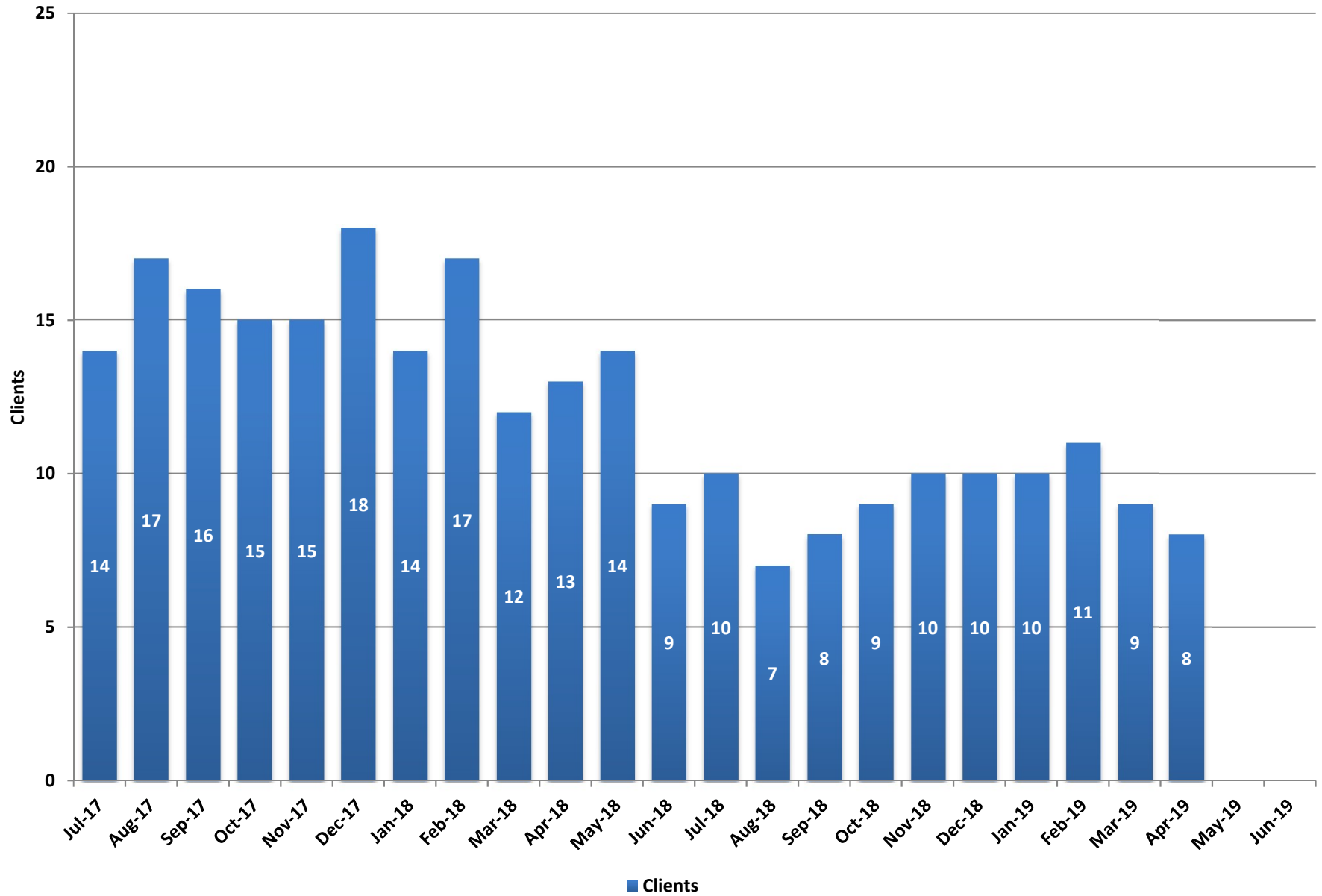
	Clients	Average Length of Stay (Days)	Waitlist
Jul-17	12	55	10
Aug-17	13	65	11
Sep-17	13	90	13
Oct-17	9	96	16
Nov-17	12	77	9
Dec-17	12	98	14
Jan-18	11	118	17
Feb-18	13	101	18
Mar-18	13	70	19
Apr-18	14	95	16
May-18	18	100	14
Jun-18	16	89	10
Jul-18	16	69	7
Aug-18	16	76	11
Sep-18	14	98	14
Oct-18	14	90	8
Nov-18	14	92	6
Dec-18	12	75	6
Jan-19	15	73	3
Feb-19	18	86	3
Mar-19	11	83	3
Apr-19	16	83	5
May-19			
Jun-19			

### Fiscal Year Averages

	Clients	Average Length of Stay (Days)	Waitlist
FY14	15	87	21
FY15	15	93	14
FY16	14	93	14
FY17	14	72	13
FY18	13	88	14
FY19 YTD	15	82	7



# Family Learning Homes

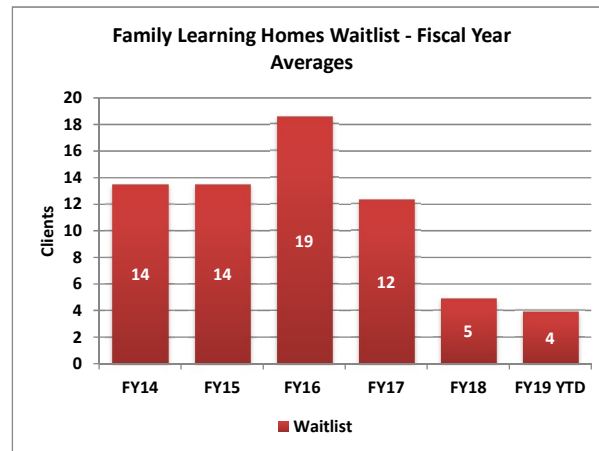
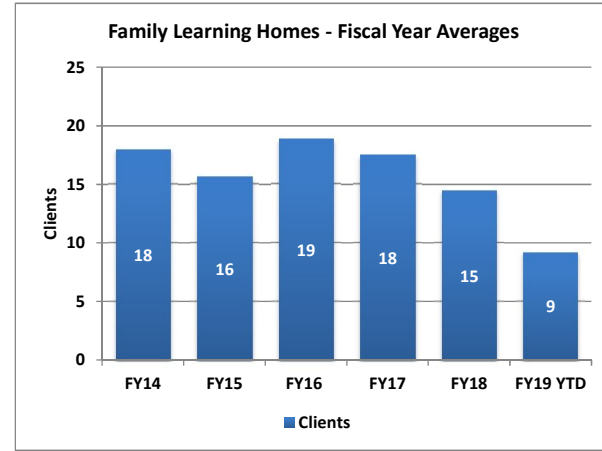
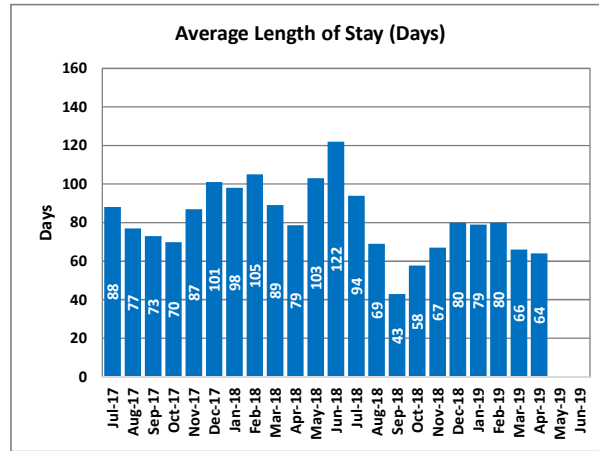




# Family Learning Homes

The four Family Learning Homes in Northern Nevada provide a behavioral health treatment home with programming designed to meet the specific behavioral and emotional needs of children and adolescents ages 6 through 17. The goals of treatment are to increase youths' emotional and behavioral functioning and to successfully transition them to family homes/lower levels of care in the community. The current bed capacity is five per home (20 total).

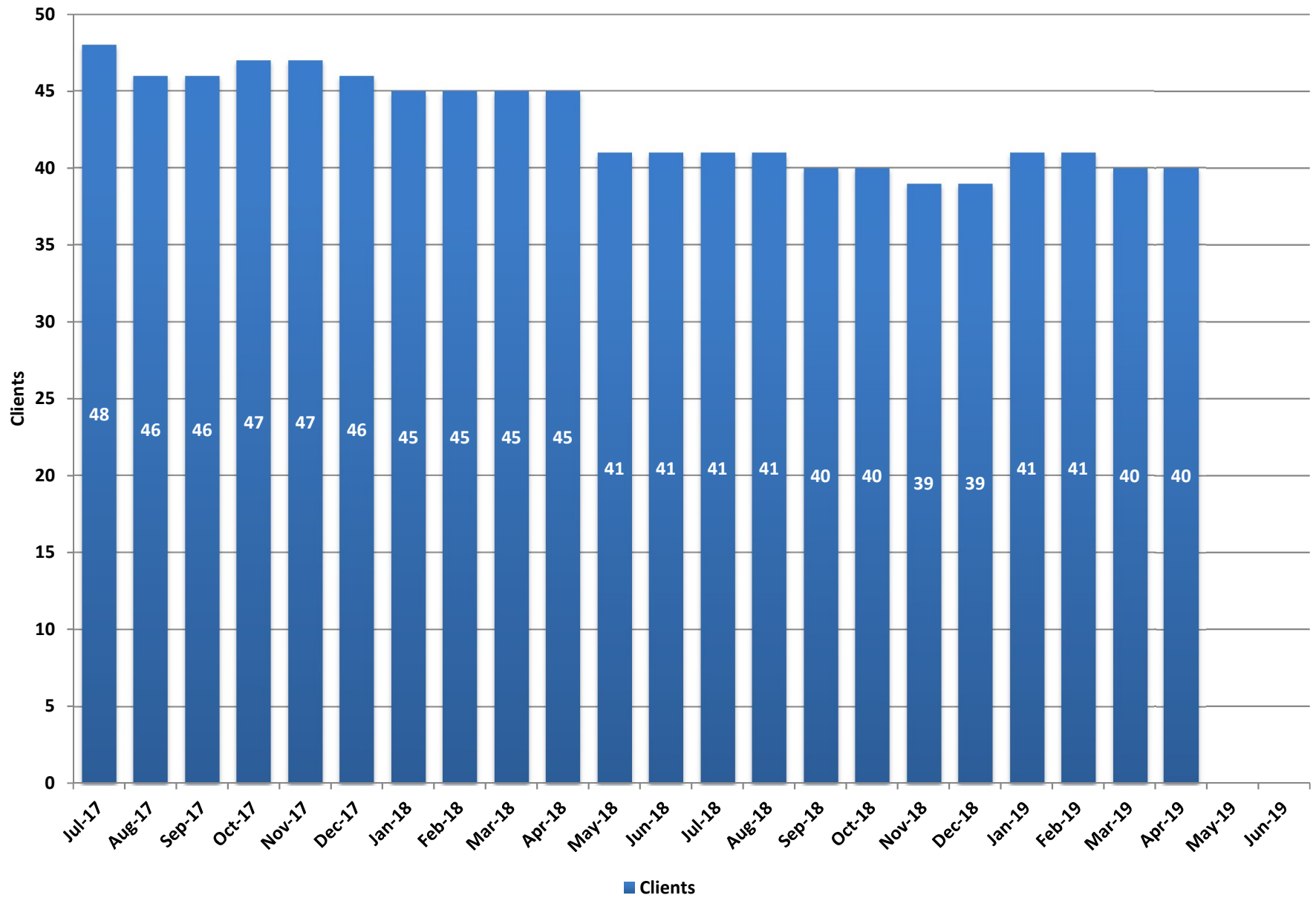
	Clients	Average Length of Stay (Days)	Waitlist
Jul-17	14	88	8
Aug-17	17	77	4
Sep-17	16	73	3
Oct-17	15	70	5
Nov-17	15	87	4
Dec-17	18	101	2
Jan-18	14	98	8
Feb-18	17	105	7
Mar-18	12	89	5
Apr-18	13	79	3
May-18	14	103	3
Jun-18	9	122	7
Jul-18	10	94	6
Aug-18	7	69	11
Sep-18	8	43	5
Oct-18	9	58	2
Nov-18	10	67	3
Dec-18	10	80	1
Jan-19	10	79	3
Feb-19	11	80	2
Mar-19	9	66	3
Apr-19	8	64	3
May-19			
Jun-19			



## Fiscal Year Averages

	Clients	Average Length of Stay (Days)	Waitlist
FY14	18	95	14
FY15	16	87	14
FY16	19	103	19
FY17	18	87	12
FY18	15	91	5
FY19 YTD	9	70	4

## Intermediate Care Facility for Intellectual and Developmental Disabilities



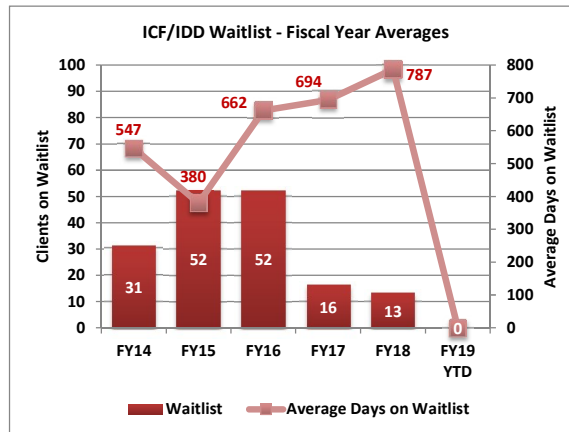
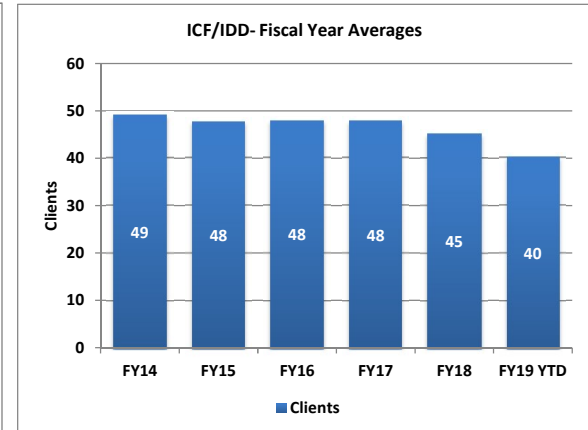
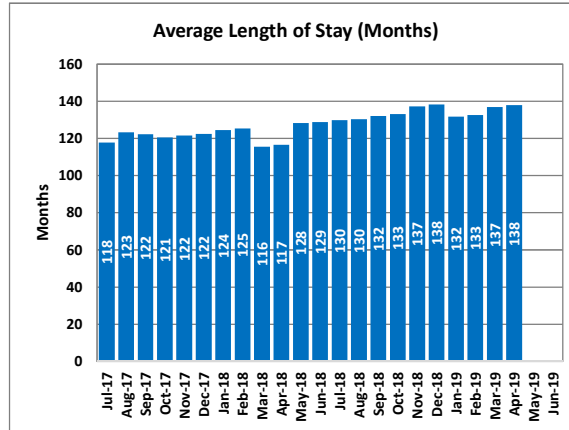
# Intermediate Care Facility for Intellectual and Developmental Disabilities

Desert Regional Center ICF/IDD is a residential facility for adults with intellectual disabilities and related conditions located in Las Vegas. The ICF/IDD campus homes provide services, habilitation, and support to people with intensive needs who are unable to reside in community settings. The facility provides behavioral assessment and intervention, recreational therapy, dietary consultation, and 24-hour nursing support to residents. The current capacity is 48.

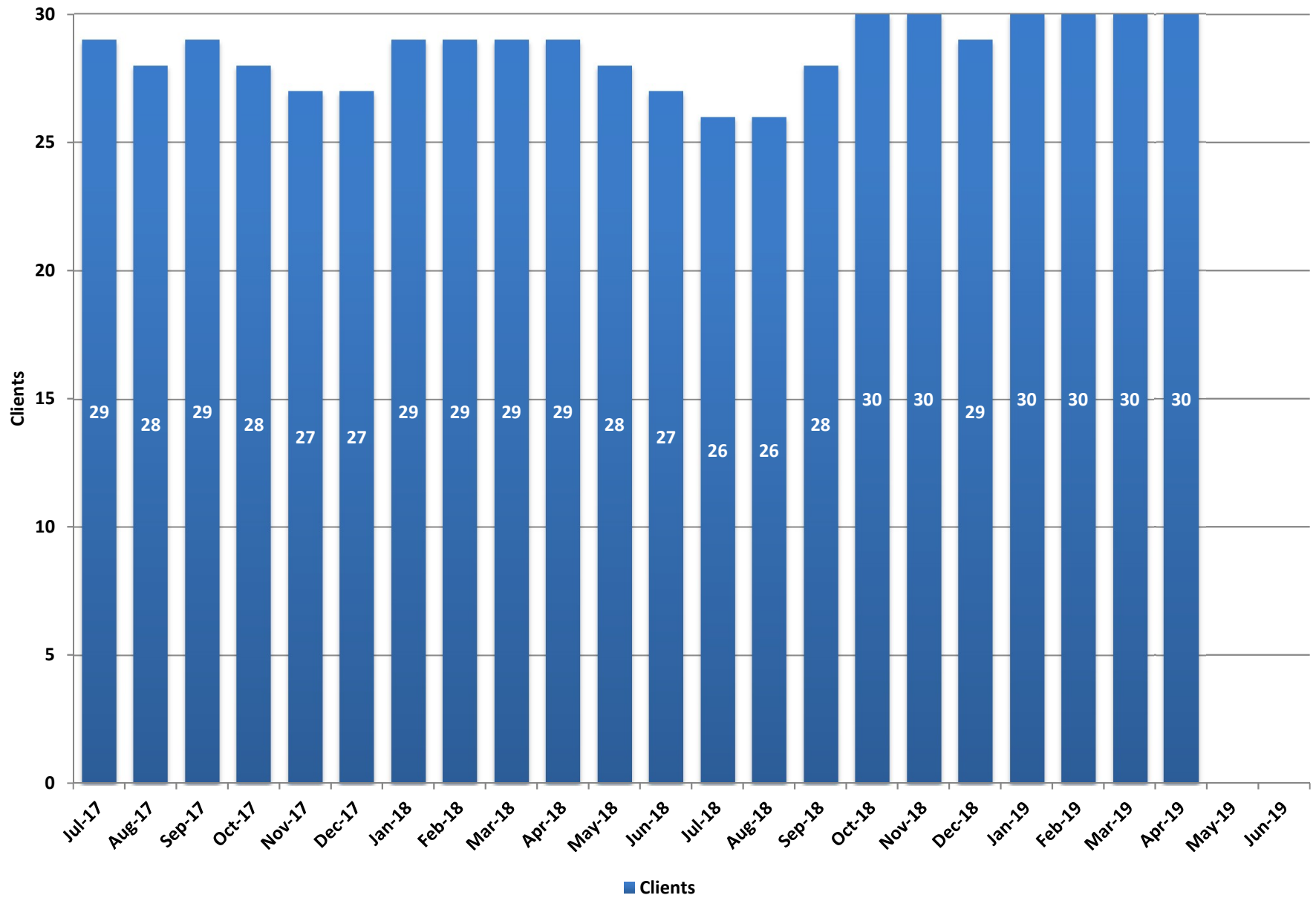
	Clients	Average Length of Stay (Months)	Waitlist	Average Days on Waitlist
Jul-17	48	118	12	848
Aug-17	46	123	12	879
Sep-17	46	122	15	730
Oct-17	47	121	15	761
Nov-17	47	122	15	842
Dec-17	46	122	15	822
Jan-18	45	124	15	853
Feb-18	45	125	15	881
Mar-18	45	116	15	912
Apr-18	45	117	15	942
May-18	41	128	15	972
Jun-18	41	129	0	0
Jul-18	41	130	0	0
Aug-18	41	130	0	0
Sep-18	40	132	0	0
Oct-18	40	133	0	0
Nov-18	39	137	0	0
Dec-18	39	138	0	0
Jan-19	41	132	0	0
Feb-19	41	133	0	0
Mar-19	40	137	0	0
Apr-19	40	138	0	0
May-19				
Jun-19				

### Fiscal Year Averages

	Clients	Average Length of Stay (Months)	Waitlist	Average Days on Waitlist
FY14	49		31	547
FY15	48		52	380
FY16	48	113	52	662
FY17	48	115	16	694
FY18	45	122	13	787
FY19 YTD	40	134	0	0



# NNAMHS Dini-Townsend Hospital



# NNAMHS Dini-Townsend Hospital

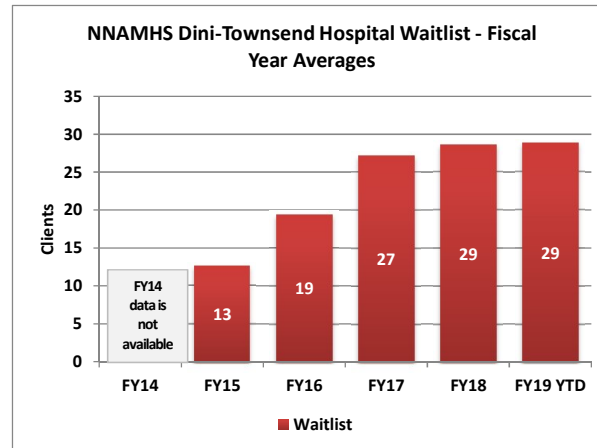
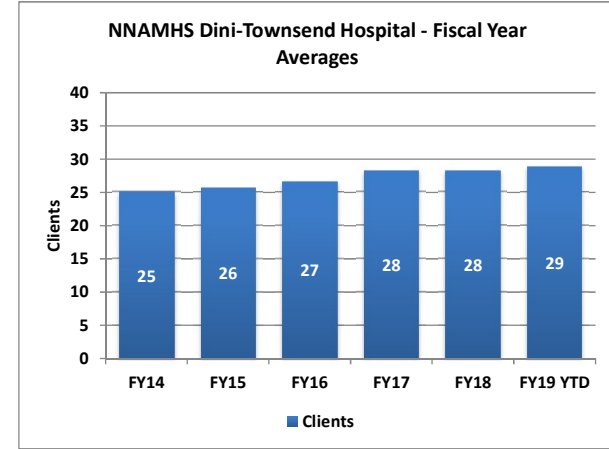
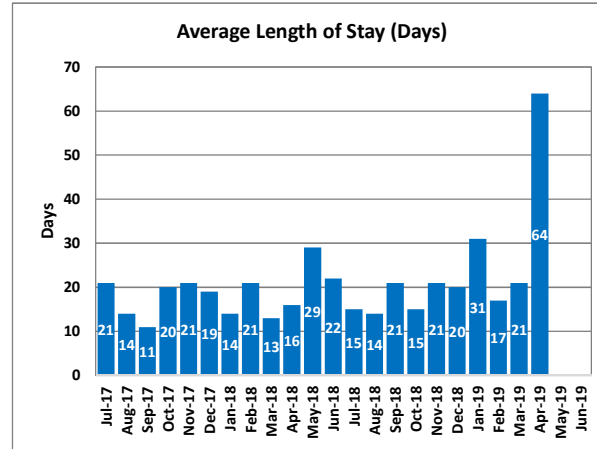
Dini-Townsend Hospital, on the campus of Northern Nevada Adult Mental Health Services, is located in Sparks, Nevada. The mission is to provide psychiatric treatment and rehabilitation services in the least restrictive setting to support personal recovery and enhance quality of life. The hospital primarily serves those individuals that have limited access to community resources. The hospital is licensed for 50 beds but is staffed for 30 beds. The hospital has a rapid stabilization unit of 10 beds and a unit of 20 beds for those individuals needing longer term care. Services also include a high emphasis on discharge planning in order to assist the consumer with returning to the community as quickly as possible and within a safe environment.

	Clients	Average Length of Stay (Days)	Waitlist
Jul-17	29	21	29
Aug-17	28	14	30
Sep-17	29	11	30
Oct-17	28	20	28
Nov-17	27	21	27
Dec-17	27	19	27
Jan-18	29	14	29
Feb-18	29	21	29
Mar-18	29	13	29
Apr-18	29	16	29
May-18	28	29	29
Jun-18	27	22	27
Jul-18	26	15	25
Aug-18	26	14	26
Sep-18	28	21	28
Oct-18	30	15	30
Nov-18	30	21	30
Dec-18	29	20	29
Jan-19	30	31	30
Feb-19	30	17	30
Mar-19	30	21	30
Apr-19	30	64	30
May-19			
Jun-19			

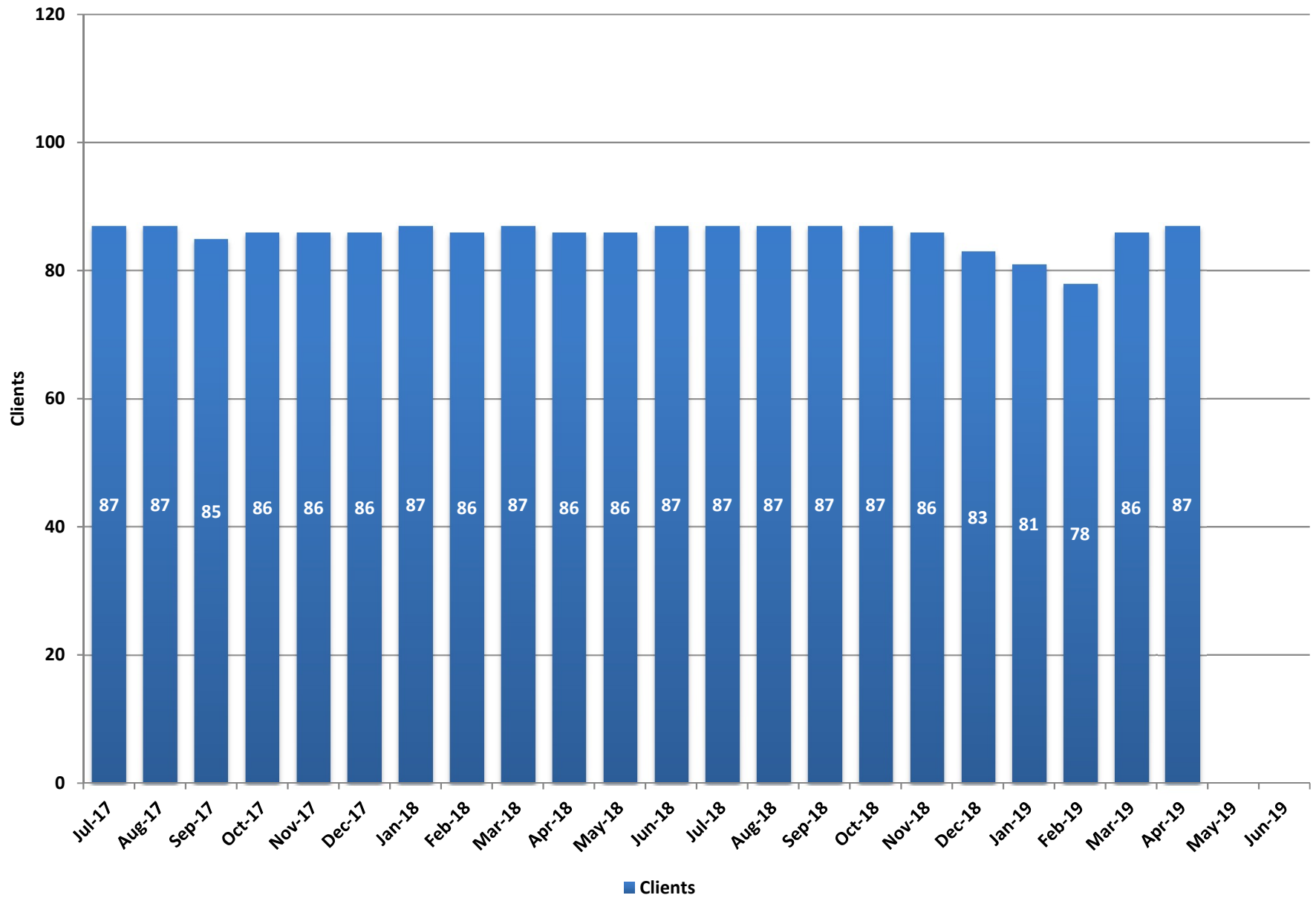
Note: Waitlist was not measured prior to December 2014.

## Fiscal Year Averages

	Clients	Average Length of Stay (Days)	Waitlist
FY14	25	6	
FY15	26	7	13
FY16	27	12	19
FY17	28	15	27
FY18	28	18	29
FY19 YTD	29	24	29



# SNAMHS Rawson-Neal Hospital



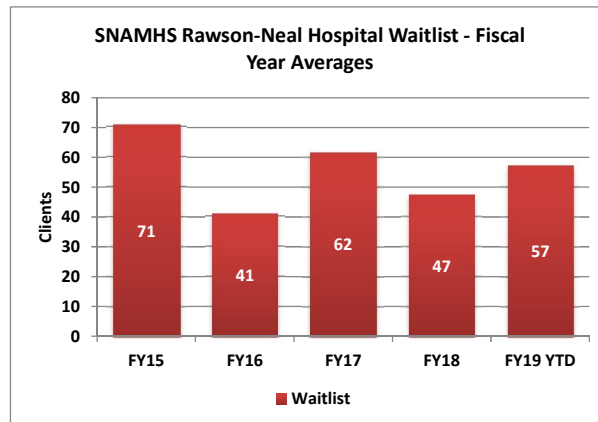
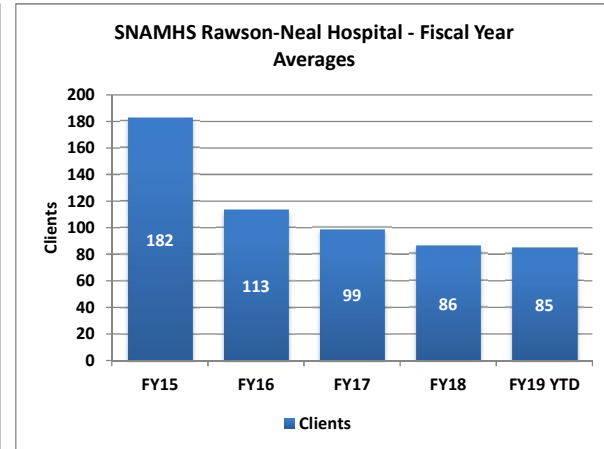
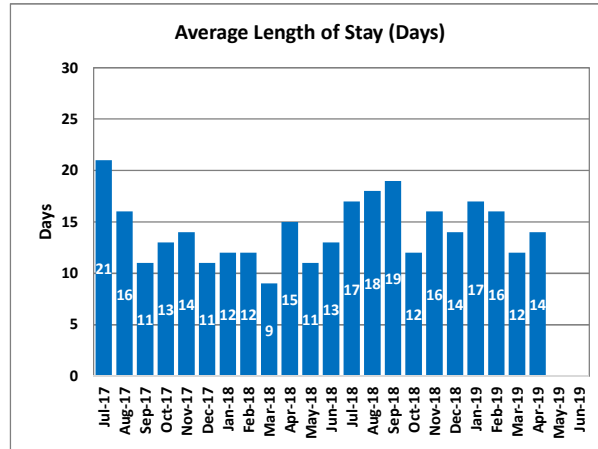
# SNAMHS Rawson-Neal Hospital

Southern Nevada Adult Mental Health Services is a licensed 274 bed facility that provides psychiatric services to individuals with mental illness. The campus houses both civil and forensic units, where behavioral assessments, evaluation and treatment are provided by psychiatrists, psychologists and other support services by trained nursing and social services staff. SNAMHS (Rawson-Neal Hospital) civil bed capacity is 160.

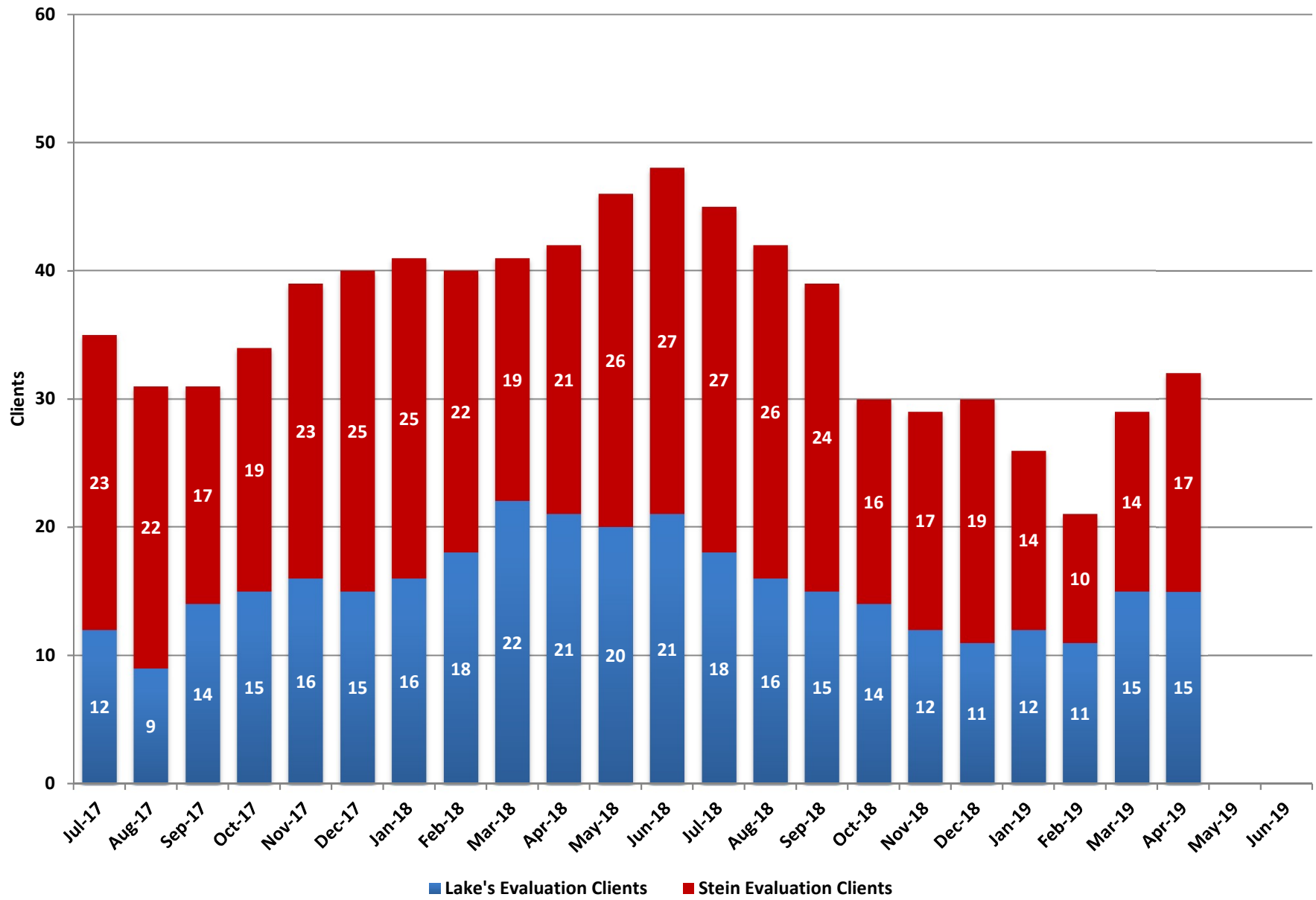
	Clients	Average Length of Stay (Days)	Waitlist
Jul-17	87	21	60
Aug-17	87	16	57
Sep-17	85	11	38
Oct-17	86	13	38
Nov-17	86	14	42
Dec-17	86	11	43
Jan-18	87	12	48
Feb-18	86	12	49
Mar-18	87	9	43
Apr-18	86	15	42
May-18	86	11	46
Jun-18	87	13	61
Jul-18	87	17	55
Aug-18	87	18	65
Sep-18	87	19	57
Oct-18	87	12	67
Nov-18	86	16	58
Dec-18	83	14	64
Jan-19	81	17	63
Feb-19	78	16	53
Mar-19	86	12	48
Apr-19	87	14	43
May-19			
Jun-19			

### Fiscal Year Averages

	Clients	Average Length of Stay (Days)	Waitlist
FY15	182	18	71
FY16	113	17	41
FY17	99	19	62
FY18	86	13	47
FY19 YTD	85	16	57



### Adult Forensic Facilities - Evaluation Clients

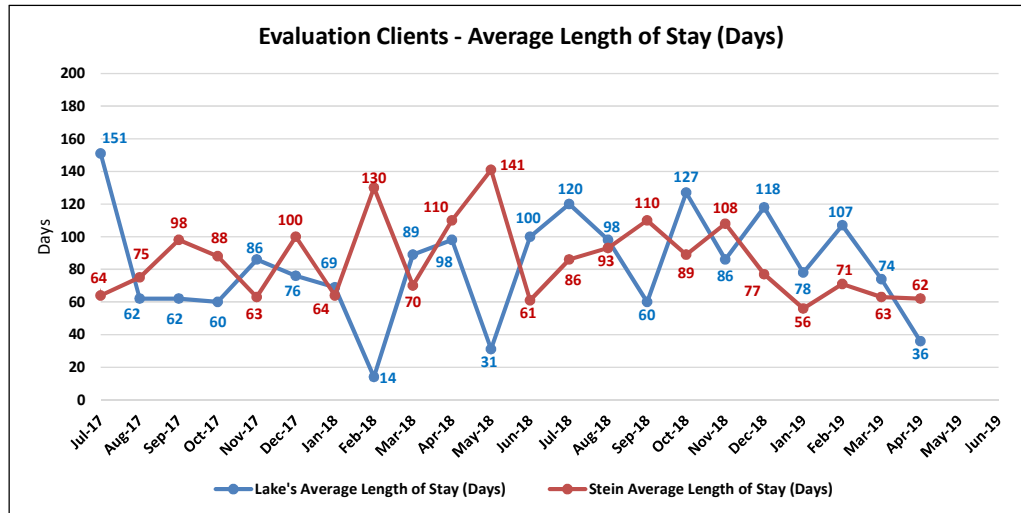




# Adult Forensic Facilities - Evaluation Clients

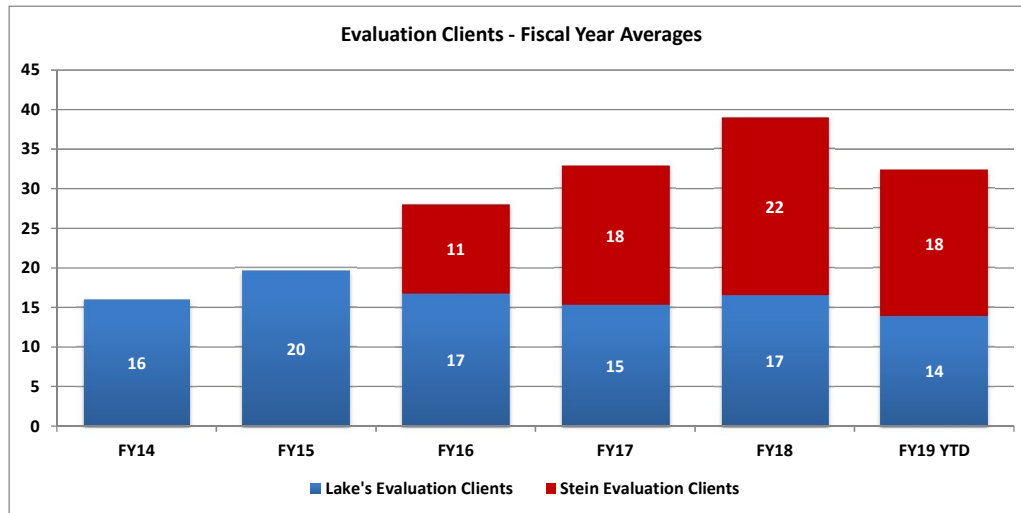
Lake's Crossing Center is a forensic behavioral health facility located in Sparks. The program provides treatment for severe mental illness and other disabling conditions that interfere with a person's ability to proceed with their adjudication or return to the community after having been found not guilty by reason of insanity/incompetent without probability of attaining competence. The facility has a bed capacity of 86. SNAMHS secure forensic units (Stein Hospital and C-Pod) provide competency evaluations to adults who are court committed. The bed capacity is 68.

	Lake's Evaluation Clients	Lake's Average Length of Stay (Days)	Stein Evaluation Clients	Stein Average Length of Stay (Days)
Jul-17	12	151	23	64
Aug-17	9	62	22	75
Sep-17	14	62	17	98
Oct-17	15	60	19	88
Nov-17	16	86	23	63
Dec-17	15	76	25	100
Jan-18	16	69	25	64
Feb-18	18	14	22	130
Mar-18	22	89	19	70
Apr-18	21	98	21	110
May-18	20	31	26	141
Jun-18	21	100	27	61
Jul-18	18	120	27	86
Aug-18	16	98	26	93
Sep-18	15	60	24	110
Oct-18	14	127	16	89
Nov-18	12	86	17	108
Dec-18	11	118	19	77
Jan-19	12	78	14	56
Feb-19	11	107	10	71
Mar-19	15	74	14	63
Apr-19	15	36	17	62
May-19				
Jun-19				

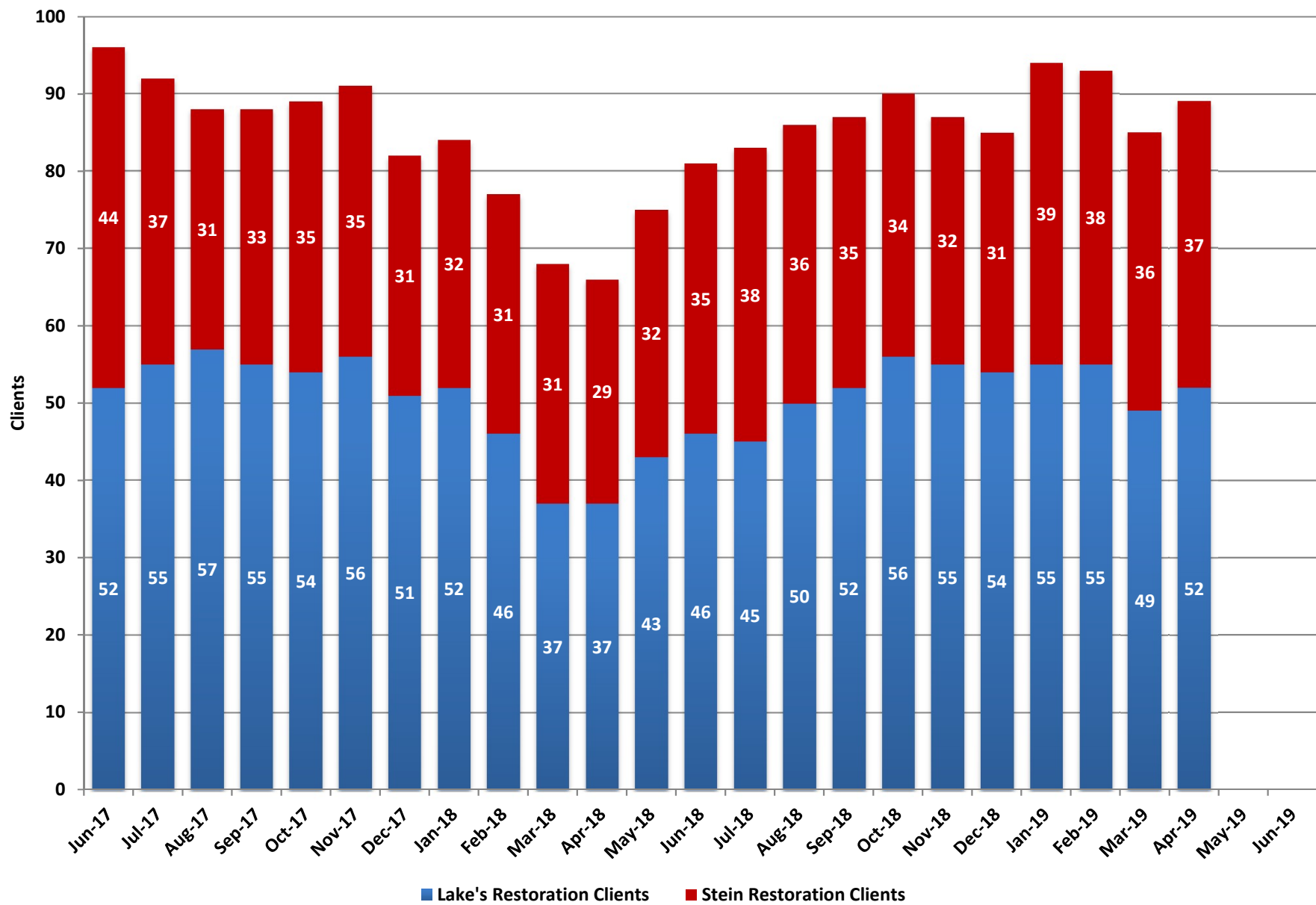


## Fiscal Year Averages

	Lake's Evaluation Clients	Lake's Average Length of Stay (Days)	Stein Evaluation Clients	Stein Average Length of Stay (Days)
FY14	16	61		
FY15	20	94		
FY16	17	84	11	88
FY17	15	90	18	89
FY18	17	75	22	89
FY19 YTD	14	90	18	82



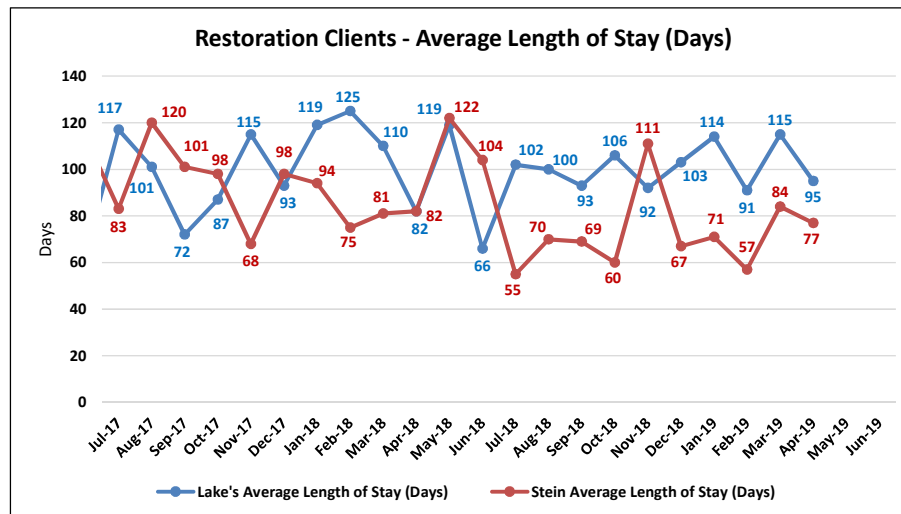
### Adult Forensic Facilities - Restoration Clients



# Adult Forensic Facilities - Restoration Clients

Lake's Crossing Center is a forensic behavioral health facility located in Sparks. The program provides treatment for severe mental illness and other disabling conditions that interfere with a person's ability to proceed with their adjudication or return to the community after having been found not guilty by reason of insanity/incompetent without probability of attaining competence. The facility has a bed capacity of 86. SNAMHS secure forensic units (Stein Hospital and C-Pod) provide competency evaluations to adults who are court committed. The bed capacity is 68.

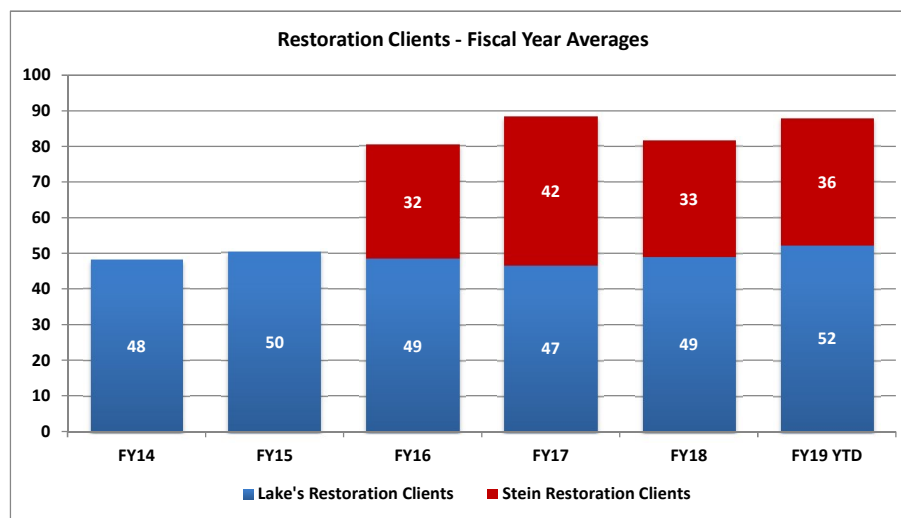
	Lake's Restoration Clients	Lake's Average Length of Stay (Days)	Stein Restoration Clients	Stein Average Length of Stay (Days)	Statewide Restoration Waitlist	Statewide Average Wait (Days)
Jul-17	55	117	37	83	19	4
Aug-17	57	101	31	120	17	5
Sep-17	55	72	33	101	23	5
Oct-17	54	87	35	98	17	5
Nov-17	56	115	35	68	14	6
Dec-17	51	93	31	98	16	4
Jan-18	52	119	32	94	15	7
Feb-18	46	125	31	75	9	6
Mar-18	37	110	31	81	10	4
Apr-18	37	82	29	82	12	5
May-18	43	119	32	122	18	4
Jun-18	46	66	35	104	17	4
Jul-18	45	102	38	55	22	3
Aug-18	50	100	36	70	16	5
Sep-18	52	93	35	69	16	6
Oct-18	56	106	34	60	17	5
Nov-18	55	92	32	111	22	4
Dec-18	54	103	31	67	24	5
Jan-19	55	114	39	71	16	6
Feb-19	55	91	38	57	15	5
Mar-19	49	115	36	84	19	5
Apr-19	52	95	37	77	22	4
May-19						
Jun-19						



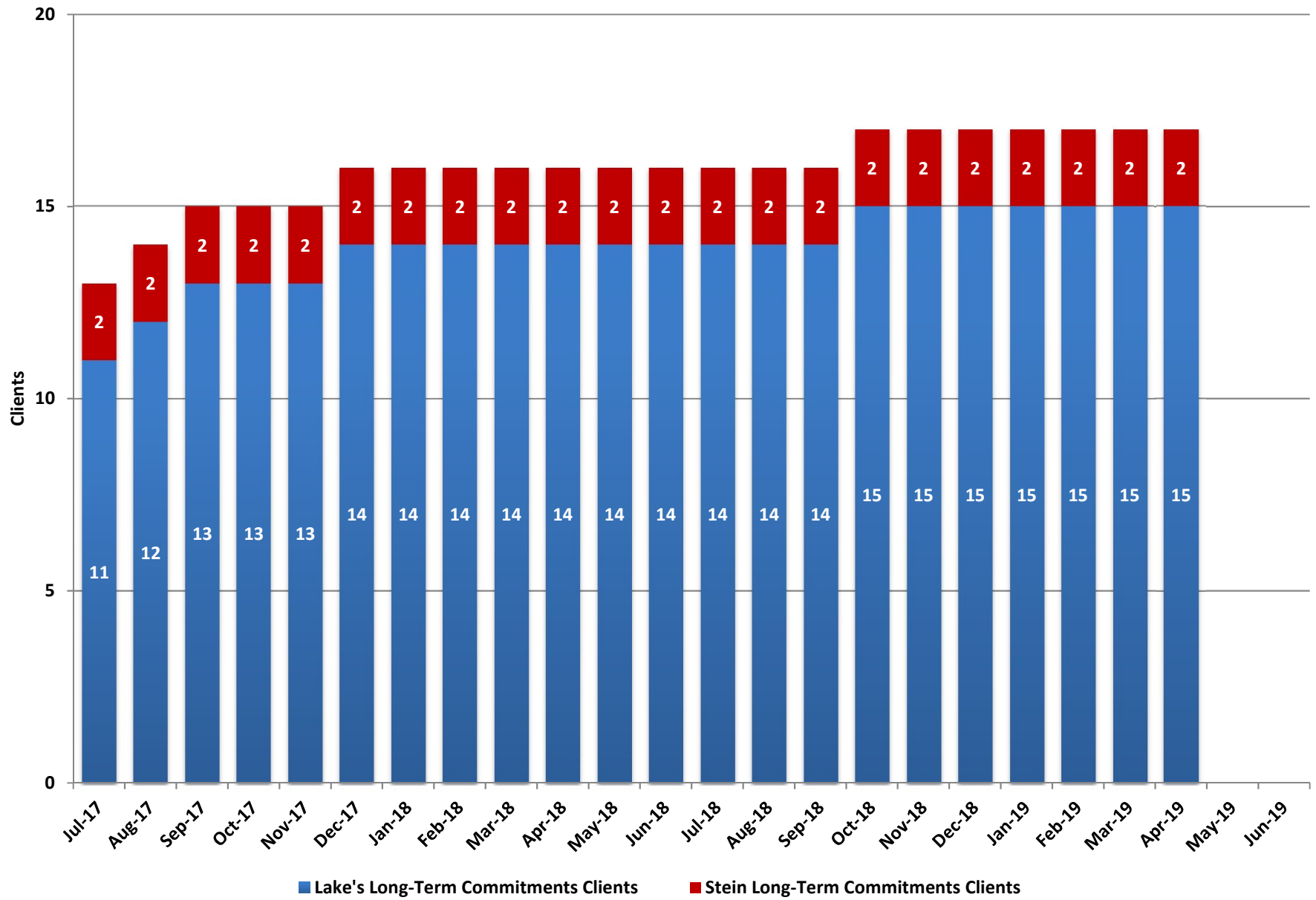
### Fiscal Year Averages

	Lake's Restoration Clients	Lake's Average Length of Stay (Days)	Stein Restoration Clients	Stein Average Length of Stay (Days)	Statewide Restoration Waitlist	Average Wait (Days)
FY14	48	96				
FY15	50	92				
FY16	49	108	32	88	17	24
FY17	47	97	42	105	18	5
FY18	49	101	33	94	16	5
FY19 YTD	52	101	36	72	19	5

Note: The Statewide Restoration Average Waitlist (days) is the total number of days individuals are on the waitlist and does not back out the 7 days that Lake's has to transfer them to a facility.



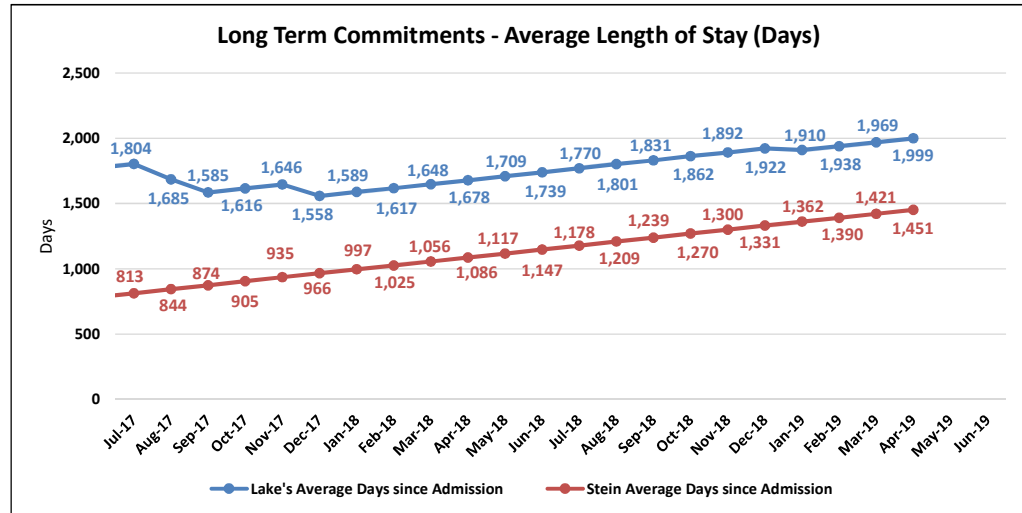
## Adult Forensic Facilities - Long-Term Commitments



# Adult Forensic Facilities - Long-Term Commitments

Lake's Crossing Center is a forensic behavioral health facility located in Sparks. The program provides treatment for severe mental illness and other disabling conditions that interfere with a person's ability to proceed with their adjudication or return to the community after having been found not guilty by reason of insanity/incompetent without probability of attaining competence. The facility has a bed capacity of 86. SNAMHS secure forensic units (Stein Hospital and C-Pod) provide competency evaluations to adults who are court committed. The bed capacity is 68.

	Lake's Long-Term Commitments Clients	Lake's Average Days since Admission	Stein Long-Term Commitments Clients	Stein Average Days since Admission
Jul-17	11	1,804	2	813
Aug-17	12	1,685	2	844
Sep-17	13	1,585	2	874
Oct-17	13	1,616	2	905
Nov-17	13	1,646	2	935
Dec-17	14	1,558	2	966
Jan-18	14	1,589	2	997
Feb-18	14	1,617	2	1,025
Mar-18	14	1,648	2	1,056
Apr-18	14	1,678	2	1,086
May-18	14	1,709	2	1,117
Jun-18	14	1,739	2	1,147
Jul-18	14	1,770	2	1,178
Aug-18	14	1,801	2	1,209
Sep-18	14	1,831	2	1,239
Oct-18	15	1,862	2	1,270
Nov-18	15	1,892	2	1,300
Dec-18	15	1,922	2	1,331
Jan-19	15	1,910	2	1,362
Feb-19	15	1,938	2	1,390
Mar-19	15	1,969	2	1,421
Apr-19	15	1,999	2	1,451
May-19				
Jun-19				



## Fiscal Year Averages

	Lake's Long-Term Commitments Clients	Lake's Average Days since Admission	Stein Long-Term Commitments Clients	Stein Average Days since Admission
FY14	9	1,207		
FY15	10	1,423	2	
FY16	10	1,660	2	250
FY17	10	1,710	2	615
FY18	13	1,656	2	980
FY19 YTD	15	1,889	2	1,315

Note: These clients are committed for up to ten years.

